



St. Mary's School

Four-Year Education Plan

2024-2025



155 11 Street SW - Medicine Hat AB - 403-527-7616



INTRODUCTION

St. Mary's school is a grade 7 - 9 school which offers French Immersion, a fee based Fine Arts Academy, Alternative programming, and regular programming. We are located in central Medicine Hat and have a population of 400 students. This year we are pleased that we have 89



Students registered in our Fine Arts Academy, 29 students registered in our French Immersion program, and ongoing availability in our Alternative Program. St. Mary's School's primary enrollment is generated from students transitioning from five Catholic elementary Schools in Medicine Hat (Mother Teresa, St. Michael's, St. Francis St. Louis, and Ecole St. John Paul II School) . We are one of two feeder schools to Monsignor McCoy High School along with our sister school Notre Dame Academy

Message From Administration

Welcome to another great year at St. Mary's School!

We are honoured and humbled to serve the St. Mary's community as your administrators and look forward to working with you this year!

This school is awesome! As we look forward to a new school year we are so excited about what we have in store. We truly have something for everyone here! Our Fine Arts Academy is always sharing their talents with the community. Our French Immersion students fundraise and travel to Quebec. Our Alternative Program is reaching students with diverse learning needs. And our General Program has the widest variety of options in the city. On top of all of this, our extracurricular offerings are second to none: we have successful sports teams, our annual musical production, and clubs that cater to countless interests. Most importantly, the staff at this school love kids and it shows.

We continue to commit to providing the highest quality of Catholic education to our students and look forward to strengthening our community through the challenges and opportunities that this year presents.



Mr. Brad van Middelkoop



Mrs. Alexa Batsel

MEDICINE HAT CATHOLIC BOARD OF EDUCATION

Medicine Hat Catholic Board of Education is a publicly funded school division with over 2600 students in 9 schools: 6 elementary schools, 2 junior high schools and 1 high school.

Medicine Hat is located in Southeastern Alberta and is known as communities of choice. Also known as the sunniest city in Canada, Medicine Hat offers a low cost of living, many amenities and is an ideal place to raise a family.

Our school division ensures the integrity and enhancement of Catholic education. We are a faith-based community that strives to inspire and prepare our students to pray, to learn, to work, to live fully and serve God in one another. Our schools are immersed in faith, offering liturgies, masses, and many celebrations throughout the school year including "Faith Development Days" that enrich the lives of students, our parents and our staff.

Our division offers quality Catholic education with a focus on academic achievement and success for all students.

Our schools operate as professional learning communities through school success teams that promote effective schools in safe and caring environments. We offer strong core academic programming, diverse and inclusive fine arts programming, French immersion, comprehensive co-curricular programming and academy programming in fine arts and sports.

MISSION, VISION AND VALUES

Our Mission

In partnership with family, church and community, we provide Catholic education of the highest quality to our students.

Our Vision

A gospel-centered community committed to learning excellence, Christian service, living Christ.

Our Motto

"Showing the Face of Christ to All"

Our Principles of Practice

In our ministry we are called, always and everywhere, to:

- Model Christ
- Prayer
- Service
- Strive for Excellence

Our Values

We believe that Catholic education is a ministry that is at the heart of the church.

In our ministry, we value and celebrate:

- Teaching and living our Catholic faith.
- Our Catholic traditions.
- Our ability to offer a full range of educational programs for all students.
- The uniqueness of each child.

What do Medicine Hat Catholic schools represent?



Staff, students and families working together,
under our faith, with quality education as our foundation.

ENROLLMENT TRENDS

Grade	24-25	23-24	22-23	21-22	20-21	19-20	18-19	17-18	16-17	15-16	14-15
7	125	123	125	119	127	122	112	99	105	103	112
8	127	138	143	129	120	130	107	110	95	105	148
9	147	148	141	128	117	128	113	105	114	124	86
French Immersion	29	29	25	25	22	27	25	31	32	33	26
Total	400	409	409	376	364	380	357	345	346	365	372

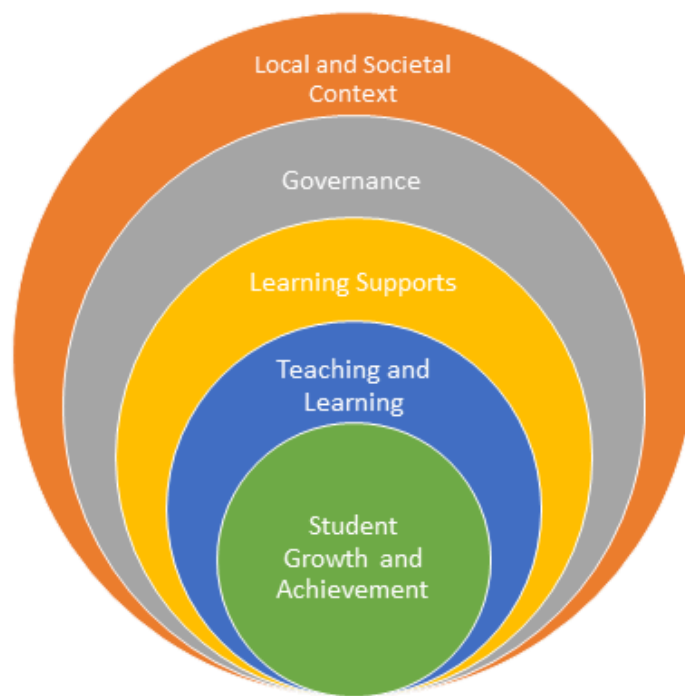
ASSURANCE

Assurance in the education system happens when community members, system stakeholders and education partners engage across five domains:

1. Student Growth and Achievement
2. Teaching and Leading
3. Learning Supports
4. Governance
5. Local and Societal Context

For the purposes of this document, a domain is an area of activity where education partners have specific responsibilities that they are accountable for and provide assurance about. Fundamentally, assurance is reflected in what the public understands, perceives and knows about student growth and achievement, where the quality of the daily interaction between teacher and student is paramount. Assuring the public that the education system is successfully supporting student growth and achievement requires engagement and thoughtful action across all five domains.

Student growth and achievement is the primary purpose of the education system and is the core outcome domain for the assurance framework. The domains of Teaching and Leading, Learning Supports and Governance support and enable Student Growth and Achievement. Local and Societal Context, while a separate domain, operates across and is integrated into the others. For the purposes of description, the domains are considered discrete and separate. However, in practice, they overlap and are interconnected and interdependent, as depicted in the graphic below:



ENGAGEMENT

Parent Advisory

St. Mary's School continues to host regular School Council meetings. Parents have the opportunity to hear a review of what has happened at the school, hear an overview of what is being planned, and provide feedback. All meetings are conducted online via Google meets and allow for parents to attend from the comfort of their home or via an internet connected device from wherever their weeknight activities dictate (i.e. soccer practice, dance rehearsal, etc.) We continue to see improved parental engagement with this format.

Fine Arts Parent Association

St. Mary's School is fortunate to offer our Fine Arts Academy. Families are required to pay an additional programming fee to be part of our Fine Arts Academy. As such we feel it is imperative to connect with this group of parents to ensure that programming is meeting their expectations and for parents to offer further support to our programming. This group meets monthly and raises funds for the purchase of additional materials and larger projects within the Fine Arts Academy. Examples of these projects include the baby grand piano in the Choral room and new wireless microphones for our Drama program.

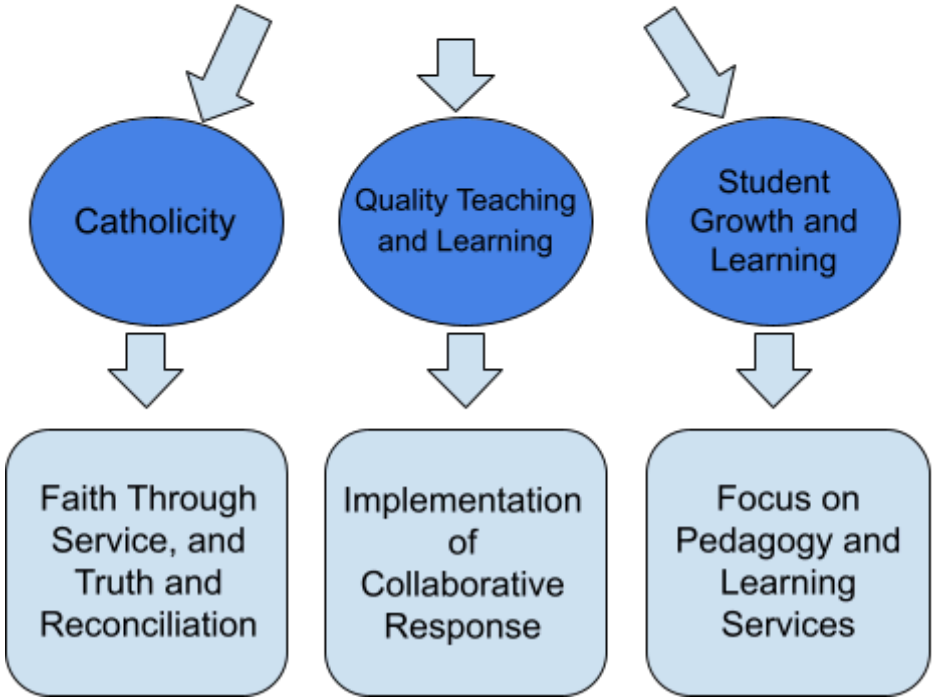
Surveys

Each year we endeavor to gain some additional data to further understand the successes and areas of improvement at our school. In the past we have conducted the Accountability Pillar Survey as well as an independent survey created by our school jurisdiction. We have considered the results of the survey and use this information to better prepare for the school year. We feel we are a school community that can adapt and meet the needs of our students quickly.

Service Projects

Every homeroom will have an opportunity to participate in a service project. These can be wide ranging and may include shoveling the neighborhood sidewalks after a snow storm, raising money for cancer, or assisting the women's shelter purple ribbon campaign. It is our intention that these projects are generated by the students and express the interests and concerns of our students which encourage them to engage with their community.

STRATEGIC PRIORITIES



SCHOOL GOALS AND IMPLEMENTATION SPECIFICS



Goal #1 - Faith through service

Implementation Specifics:

- Each homeroom will organize a service project either in the school or in the community. Projects may include raising funds for cancer research, working with the Women's Shelter Purple Ribbon campaign, or shoveling snow in our neighborhood.

Goal #2 - Truth and Reconciliation

Implementation Specifics:

- Each homeroom will be part of a project encouraging Truth and Reconciliation with our First Nations community. This may include creating a school based land acknowledgement, sharing literature from a First Nations author, or creating artwork inspired by truth and reconciliation.
- Students will be provided with opportunities for personal connection with Indigenous community through cultural exposure. The school will showcase art by Indigenous artists, create traditional foods such as bannock, and have opportunities for some students to participate in Blanket ceremonies.

Goal #3 - Fostering a Culture of Belonging

Implementation Specifics:

- Students will be provided with multiple opportunities to connect with peers and supportive adults while developing their areas of interest such as Games Club, Art Club, Archery Club, Faith Leadership, CCT lunch time and after school programs, and working with the Seniors ministry through the Parish.
- Gr. 7 students will strengthen connections to Parish, self, and others through a retreat held at Holy Family Parish.



Quality Teaching and Learning

Goal #1 - Implementation of a model for Collaborative Response

Implementation Specifics:

- All school meetings will be revised to provide focus and structure in order to address the needs of students not only on the periphery, but the entire population.
- A Student Data and Evidence system will be used to guide decision making consisting of data gathered such as Gates, Math Map, Mipi, and the Connectedness Survey, in addition to other information found in student files
- Administration will utilize information to ensure proper placement of student into appropriate programming i.e. Grade 9 students can access K and E Math and Language Arts; Students in 7 - 9 can access an academic support option.
- Staff can identify issues of concern for individual students between classes and encourage and implement supports.
- Teaching staff build capacity by leveraging collective experience



Student Growth and Learning

Goal #1 - Implementation of Learning Services Supports

Implementation Specifics:

- Our Learning Services Teacher (LST) will assist classroom teachers in supporting diverse student needs and help teachers build autonomy
- A new approach to Individual Support Plans (ISP) will be based in Universal Design for Learning (UDL) and include personalized connections with teacher champions and increased student accountability

Goal #2 - Focus on Pedagogy

Implementation Specifics:

- Professional Development Days will include presentations for staff on pedagogical topics such as student engagement, assessment, and differentiation

ALBERTA EDUCATION ASSURANCE MEASURE RESULTS

RESPONDING TO ASSURANCE MEASURE RESULTS

St. Mary's School is proud to report that we have maintained or improved our results in all required and supplemental measurement categories. These include Student Growth and Achievement, Teaching and Learning, Learning Supports, Governance, and other areas.

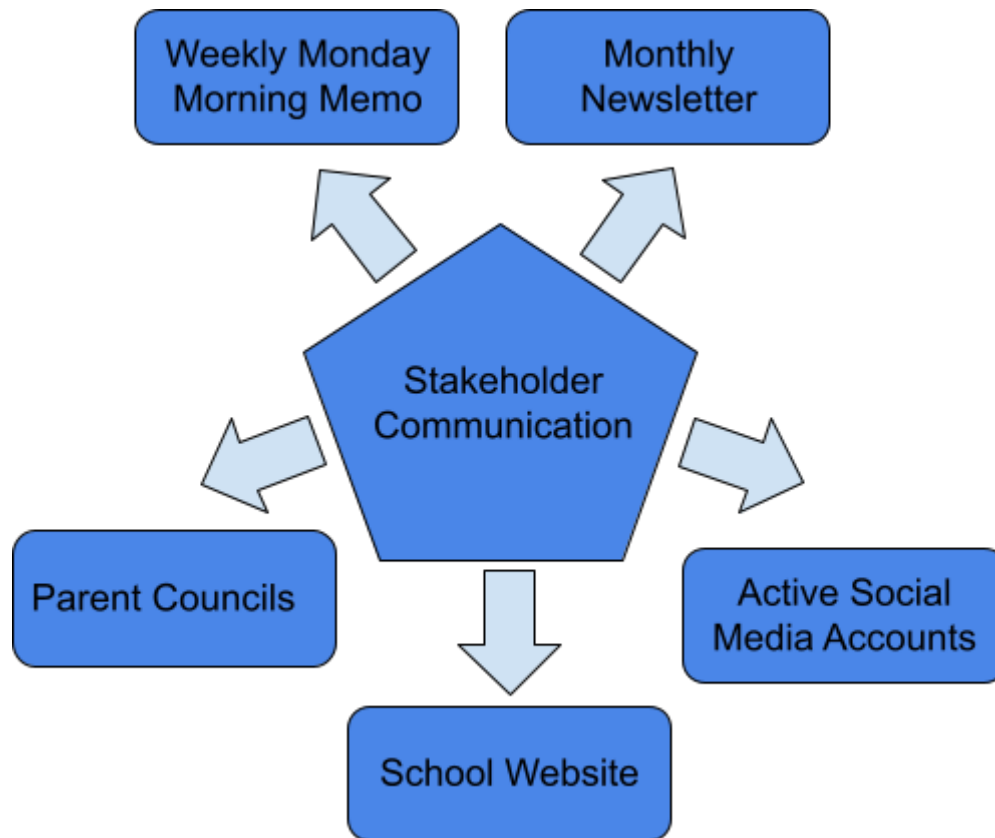
Our teachers, parents, and students continue to tell us that we are doing an excellent job of involving parents in decisions about their child's education, and agree that the St. Mary's learning environment is welcoming, caring, respectful, and safe. Furthermore, our teachers, parents, and students remain satisfied with the overall quality of basic instruction. In particular, parents' satisfaction in this area is very high.

The percentage of teachers, parents, and students who are satisfied that our students model the characteristics of active citizenship remains in good standing. In particular, students themselves identify this as an area of strength at St. Mary's School. We are proud of the level of student involvement in leadership opportunities, community service, and extracurricular activities. Our dropout rate, staff commitment to lifelong learning, attention to the Programs of Studies, student preparation for the workforce, and level of school improvement have all been maintained at a standard of excellence.

For detailed information see the St. Mary's School Spring 2024 [Alberta Education Assurance Measure Results](#) report.

COMMUNICATION

Stakeholders are communicated with in a variety ways through our school:



CONTACT US

Brad van Middelkoop
Principal
403-527-7616
www.stmarymh.ca

Alexa Batsel
Vice Principal
403-526-7616
www.stmarymh.ca